

STATLOCK PSI STABILIZATION DEVICE

MAQUET
GETINGE GROUP

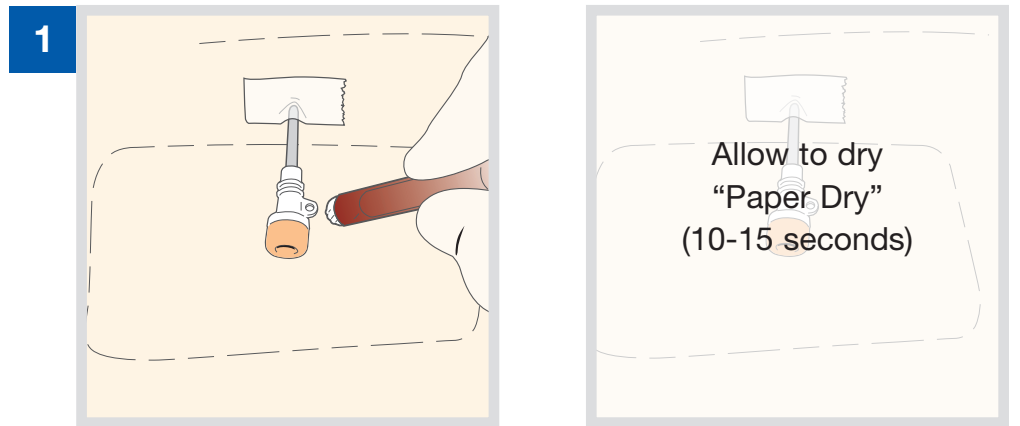
FEATURES AND BENEFITS

- 100% Elimination of suture-wound complications (i.e. bleeding, scarring, infection)
- Utilizes the familiarity of suture tying procedure without the associated suture-wound complications
- Offers skin-safe StatLock adhesive system
- Designed to provide patient comfort and safety
- Allows for quick and easy application and removal

APPLICATION TECHNIQUE

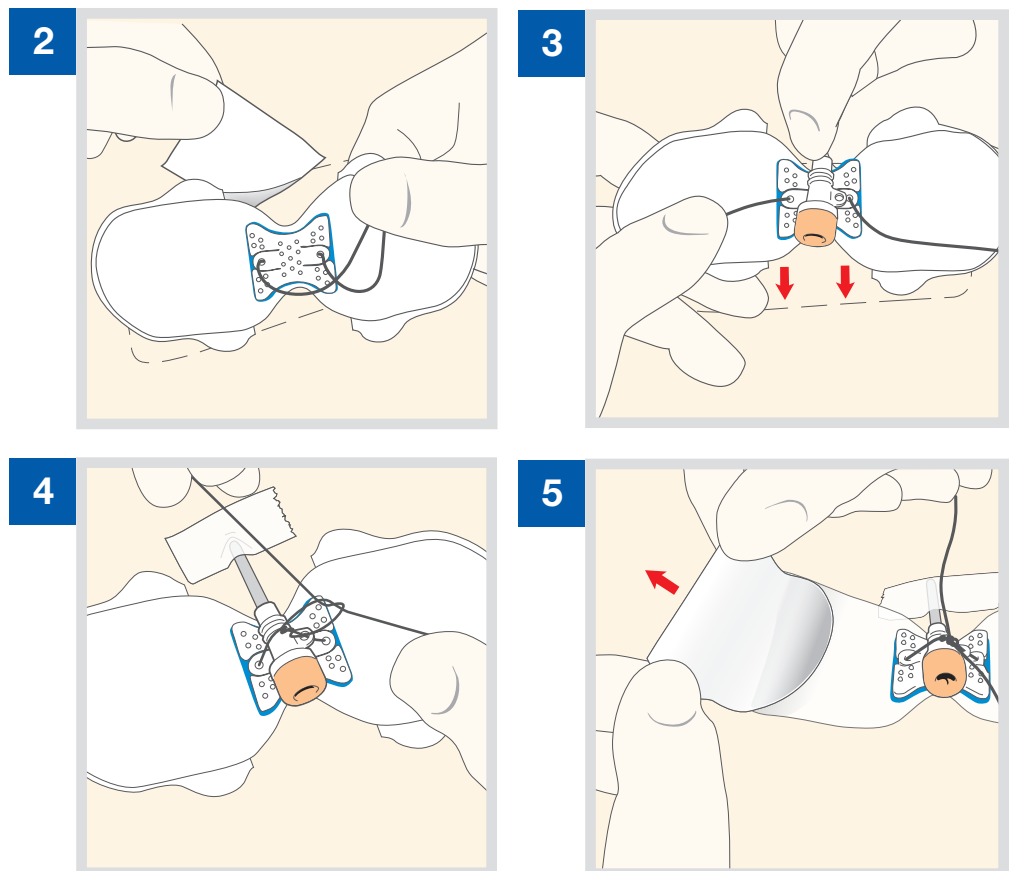
Prep:

1. Prepare targeted skin area per hospital protocol. Use skin prep provided with StatLock PSI for enhanced pad adhesion and skin protection. Allow to dry "Paper Dry" (10-15 seconds).



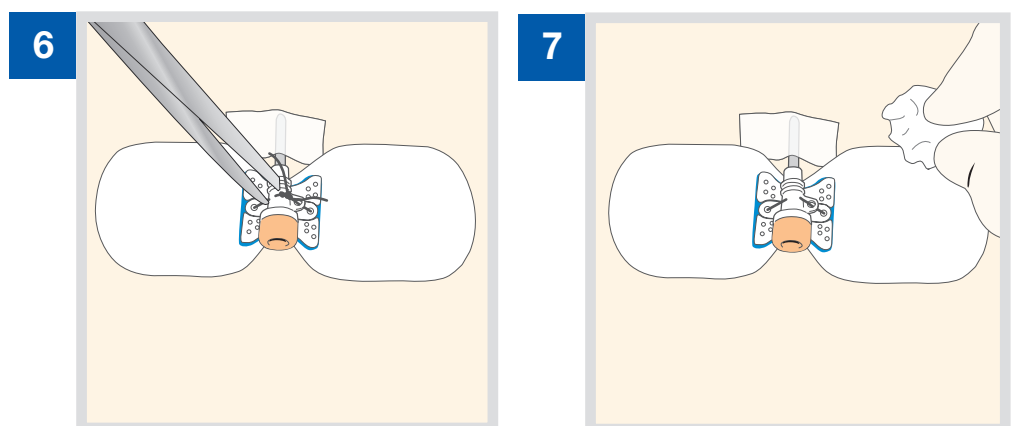
Application:

2. Remove MIDDLE SECTION of liner on back of StatLock PSI pad.
3. Place StatLock PSI pad to skin under sheath so securement hole(s) aligns with StatLock PSI ties.
4. Secure sheath and tie down.
5. Reaffirm proper positioning and remove both WING SECTION liners and secure to skin.



REMOVAL TECHNIQUE

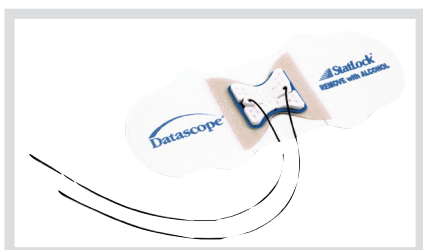
6. Disengage sheath from retainer by carefully cutting ties.
7. Dissolve adhesive by gently stroking under surface of pad with alcohol swab while continuing to lift pad. Remove pad and discard.



STATLOCK ELIMINATES SUTURE-WOUND COMPLICATIONS.



An infected suture-wound.



⚠ Caution: U.S. Federal Law restricts this device to sale by or on the order of a physician. Refer to package insert for current indications, warnings, contraindications, precautions and instructions for use. 05/09

StatLock[®]

Manufactured for:
Datascope Corp.
Cardiac Assist
15 Law Drive
Fairfield, NJ 07004
tel: 1.800.777.4222
www.datascope.com
www.maquet.com