

INTRA-AORTIC BALLOON NEW CLINICAL REFERENCE SIZING GUIDE

25cc

Approx. ht: < 5'0"
(<152cm)



34cc

Approx. ht: 5'0" to 5'4"
(152cm - 162cm)



40cc

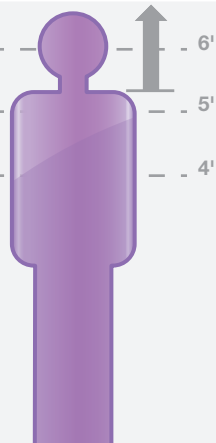
Approx. ht: 5'4" to 6'0"
(162cm - 183cm)



NEW

50cc

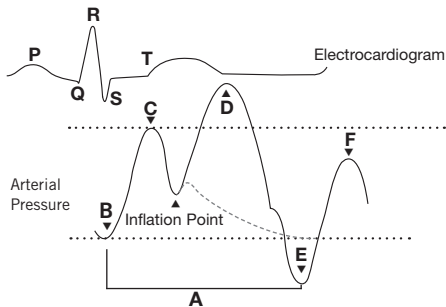
MEGA 50cc
Approx. ht: ≥ 5'4"
(≥162cm)



Note: This information is to be used as a guidance only. Clinical information and patient factors such as torso length should be considered when selecting the appropriate balloon size.

PROPER IABP TIMING

- | | |
|---|---|
| A = One complete cardiac cycle | D = Diastolic augmentation |
| B = Unassisted aortic end diastolic pressure | E = Assisted (Reduced) aortic end diastolic pressure |
| C = Unassisted systolic pressure | F = Assisted (Reduced) systolic pressure |

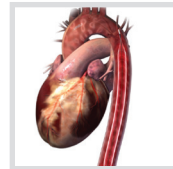


EFFECTS OF IABP

Diastole: Inflation

Augmentation of Diastolic Pressure

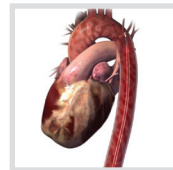
- Increase coronary perfusion
- Increase myocardial oxygen supply



Systole: Deflation

Decreased Afterload

- Decrease cardiac work
- Decrease myocardial oxygen consumption
- Increase cardiac output



24hr. Clinical Support US: 1.800.777.4222

www.datascope.com/IABPTheory www.maquet.com

Datascope Corp. 15 Law Drive, Fairfield, NJ 07004 USA Tel: 1.973.244.6100